



**NATIONAL TERRAZZO AND MOSAIC ASSOCIATION**

This **terrazzo installation** embodies the spirit of Las Vegas, where luxury and assertive design converge. The gleaming terrazzo finish is a functional and artistic centerpiece creating visual continuity across pedestrian bridges that connect three casinos. Glass aggregate brings sparkle and saturated color, while intricate patterns in zinc divider strips uphold the high-end aesthetic. [ntma.com](http://ntma.com)

**DIVISION TWELVE**

**Crux** is proof that opposites attract—wood brings the warmth while steel brings stability. The collection includes stackable arm and armless café chairs, smooth-rolling casters, bar and counter height stools, and matching tables in all 3 heights to bring it all together. [division12.com](http://division12.com)



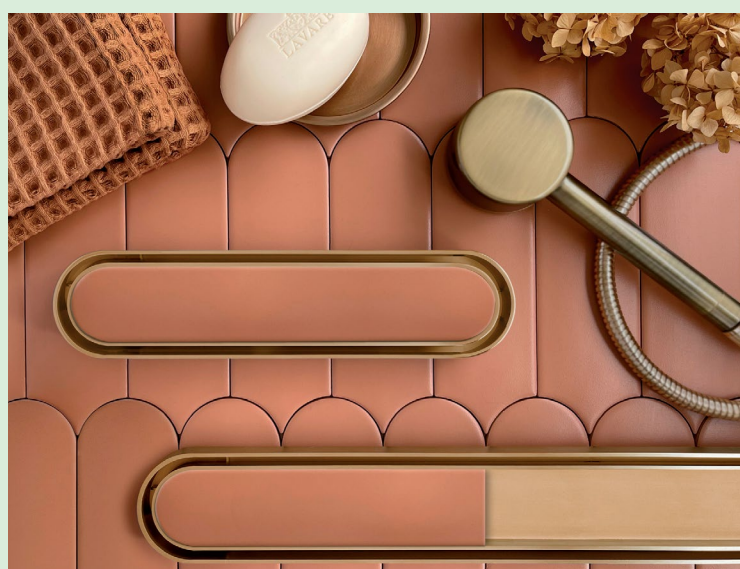
**FABRICUT CONTRACT**

Featuring tailored menswear-inspired solids, elegant herringbone designs, and casual strié textures in sophisticated neutrals and vibrant hues, **Fabricut Contract's Blackout Library** provides a functional element or a decorative statement at the window with its and 3-Pass and 4-Pass blackout options. [fabricutcontract.com](http://fabricutcontract.com)



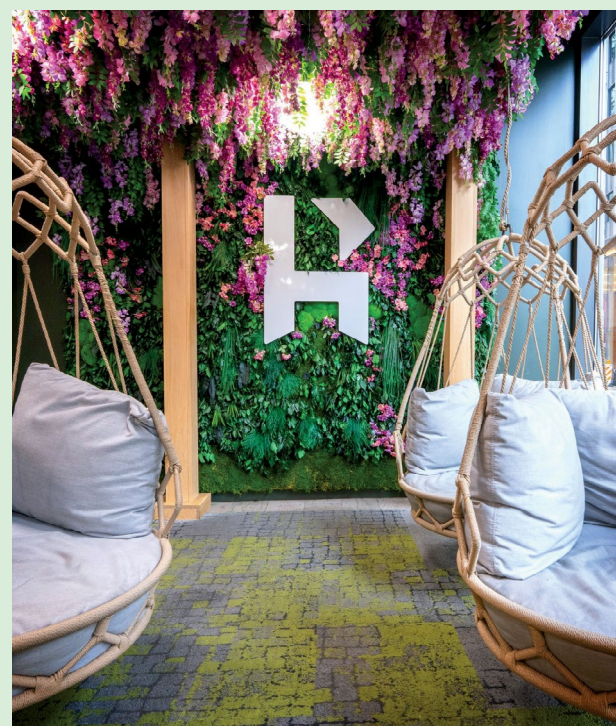
**FRÍANT**

With its clean lines and understated elegance, our **Aras Collection** introduces timeless, minimalist styling to any room. Both seating sizes are versatile enough to be used across a range of settings. Choose between eight colors in our Sunday fabrics lineup to create stunning seating that brings together impeccable design and comfort in perfect harmony. [friant.com](http://friant.com)



**INFINITY DRAIN**

Infinity Drain introduces its newest tile insert linear drain, **Disco-rectangle**. Featuring soft, rounded corners and inspired by mid-century modern design, this style seamlessly blends form and function. Disco-rectangle emphasizes a fluid, organic aesthetic with smooth, curved contours. This design moves away from sharp angles while maintaining the structural integrity and performance of the product. [infinitydrain.com](http://infinitydrain.com)



**NATURALIST**

Naturalist creates **immersive biophilic environments** through preserved moss wall installations that blend art, sustainability, and innovation. Rooted in the belief that nature should be a part of everyday spaces, our work is designed to improve well-being, enhance acoustics, and contribute to healthier, more inspiring built environments. [naturalist.us](http://naturalist.us)



**IMPACT ACOUSTIC**

A revolutionary acoustic curtain system that redefines space and sustainability with recycled materials, reusability, and a digital product passport. This **ARCHISONIC®** Textile-based room-in-room solution transforms spaces. Noren champions sustainability through recycled and reusable materials, circular design and a digital product passport. Empowering designers with unparalleled colour customisation, and offering businesses a profitable path to a circular economy. Transform your space with the Noren acoustic curtain, delivering an impressive -19dB sound reduction for exceptional acoustic performance! [impactacoustic.com](http://impactacoustic.com)



**LUTRON**

Lutron doesn't make motorized window treatments—our **window treatments** are intelligent. They're designed from the start to work with our cloud-connected, location-aware smart control systems. That means they can adjust shade position automatically based on where the sun is in the sky, keeping occupants cool, focused, and comfortable while preserving outdoor views, improving building efficiency, and reducing carbon footprint.

[lutron.com/shades](https://lutron.com/shades)



**CARNEGIE**

A long-awaited expansion of the world's first biobased high-performance textile, **Xorel Luxe** is a luxurious indoor/outdoor Biobased Xorel made with a new boucle yarn. All the legendary performance and durability of Xorel, now enhanced with a much softer, more supple hand feel.

[carnegiefabrics.com/carnegie-xorel-luxe](https://carnegiefabrics.com/carnegie-xorel-luxe)



**MOHAWK GROUP**

Sustainable color for every vibe. This 12" x 36" **Color Balance II** carpet tile collection blends rich texture with a palette of 24 warm neutrals and vibrant hues. Made with Duracolor® yarns and EcoFlex ONE® backing, it's Red List Free, Beyond Carbon Neutral, and engineered for performance—perfect for expressive, high-traffic spaces that prioritize wellness and design flexibility.

[mohawkgroup.com](https://mohawkgroup.com)